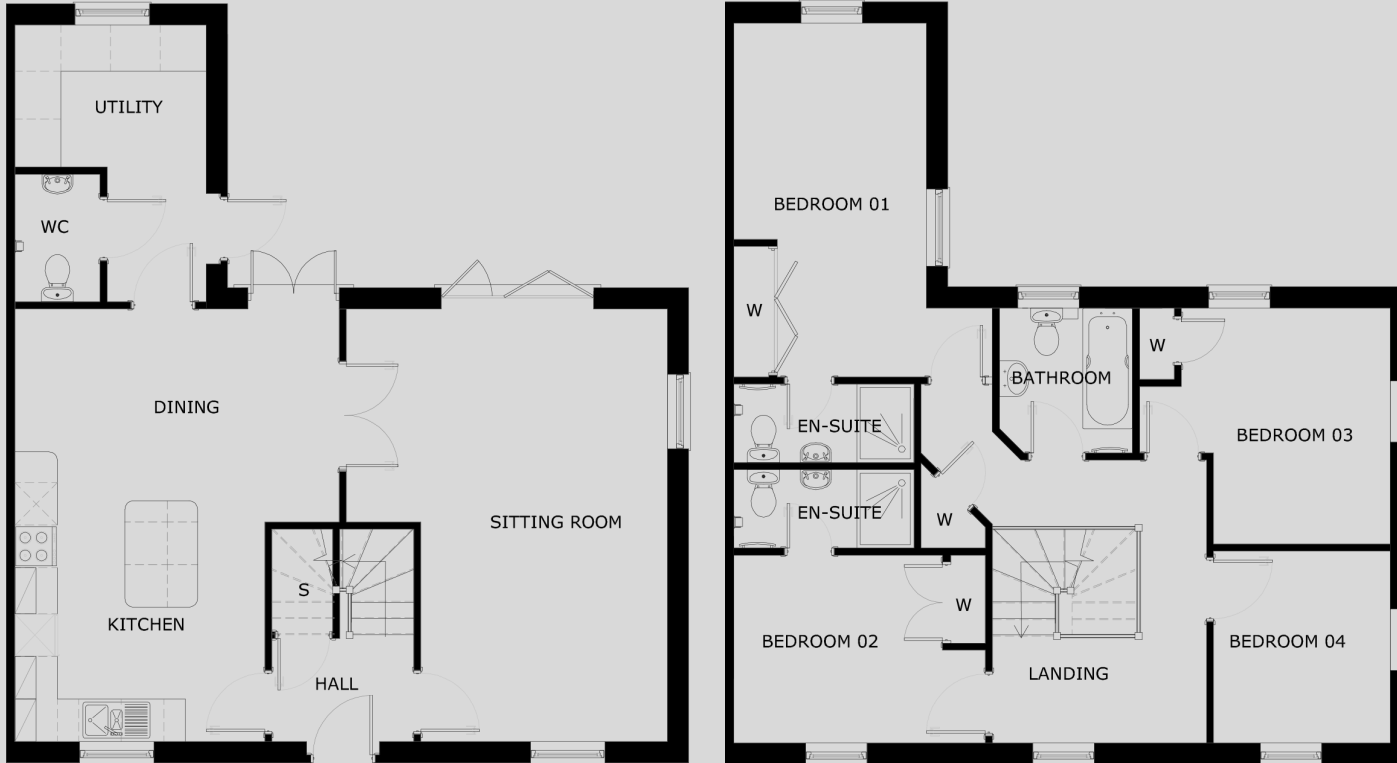




Falcon Close

Seavington . Ilminster . Somerset



THE HINTON

Plots 5 & 6 | 4 Bedroom House

The Hinton is an impressive four bedroom semi-detached family home offering flexible accommodation with cloakroom, sitting room with bi-fold doors giving access onto the patio and into the enclosed rear garden, kitchen/dining room with built in appliances and a utility room. To the first floor there are four bedrooms; two with en-suite shower rooms, three with built in wardrobes and a family bathroom.

Room Dimensions	Millimetres	Feet/Inches
Sitting Room	6100 x 4525	20' x 14'10"
Kitchen/Dining	6100 x 4575	20' x 15'
Bedroom 1	4946 x 2700	16'2" x 8'10"
Bedroom 2	3527 x 2635	11'6 x 8'7"
Bedroom 3	3307 x 2926	10'10" x 9'7"
Bedroom 4	2693 x 2473	8'10" x 8'1"

Please note: As each house is built individually, dimensions shown may alter and the internal finishes may not always be the same. External finishes, materials, landscaping, position of the windows and garages (where applicable) may also vary. Properties can also be constructed as mirror images of that shown. Please ask if you require further details or clarification.

Elevations and Internal Finished Artist impression/CGI's have been used to represent the house to be built on this site. The colours and finish of the various external elevations may vary from house to house. The area surrounding each property may also differ from that shown. Please be sure to check with our Sales Representative for the details of the finishes relating to your chosen property at the time of reservation.



www.acornhomes.co.uk
01823 428730